



Parking at Munich Airport - booking confirmation

Dear Mr. Mustermann,

Thank you for your online booking in **Terminal Parking P20** at Munich Airport.

Please keep the parking ticket which you received when entering. **It will be needed for the exit.**

With your QR-code, you can enter the booked parking area up to **4 hours** before your booked entry time. You can also drive out of the booked parking area free of charge up to **4 hours** after your booked exit time. A delayed entry as well as an earlier exit within the booked parking period is possible at any time.



Scan QR-code for entry



[Download invoice](#)

Booking details

Booking number:	T1784604
Booking date:	02.01.2026
Parking product:	Terminal Parking P20
Parking area:	P20
Entry date:	12.01.2026 at 05:00
Exit date:	14.01.2026 at 21:00
License Plate:	FSFM121E
Name:	Max Mustermann

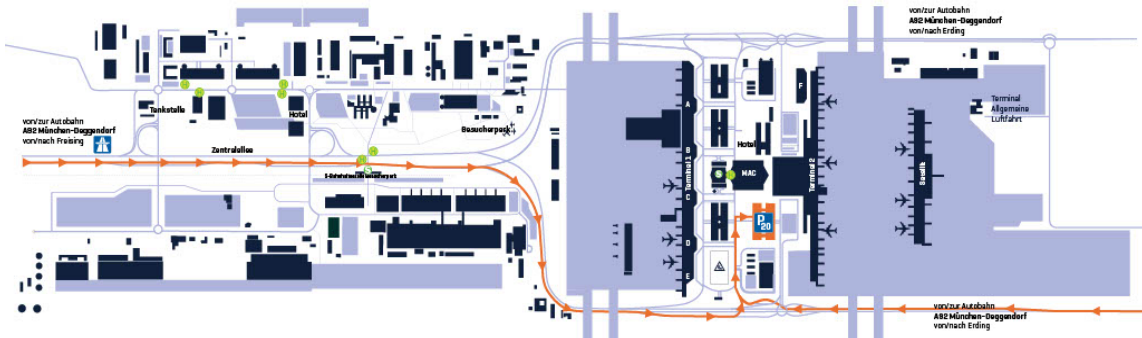
Company: Mustermann AG
Street/Nr.: Nordallee 257
Postcode, City: 85356 Flughafen MUC
Country: Germany
Phone number: +49123456789

Payment information

Payment method:

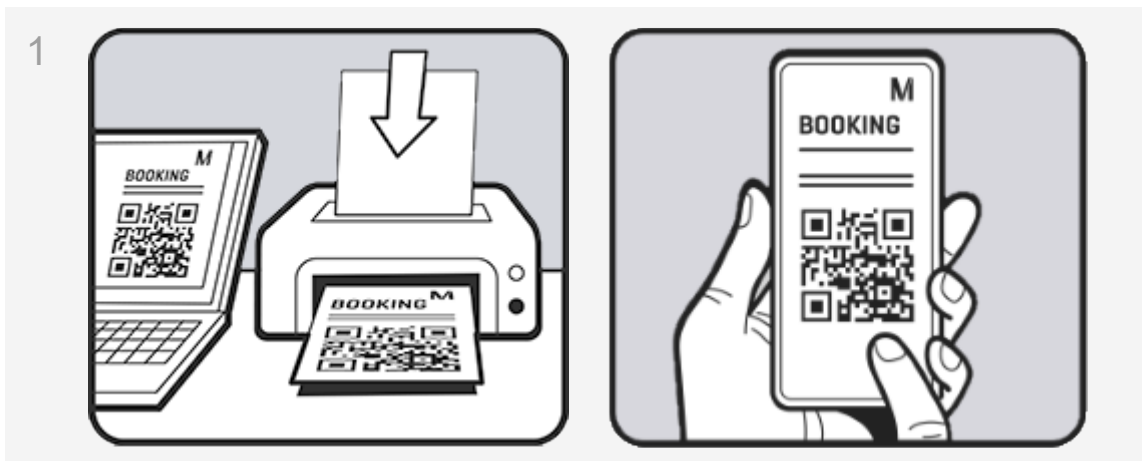
Total: 116,99 €

The document is a booking confirmation and not an invoice in the sense of. §14, 14a UStG; the document does not entitle you to deduct input tax in the sense of §15 UStG.



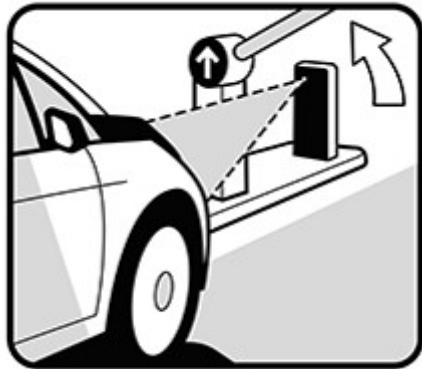
The address of the P20 for your navigation device: Terminalstraße Mitte 14, 85445 Oberding
P20 on Google Maps: <https://goo.gl/maps/Fw5GWiMGZ9SmLeg17>

How the parking process works:



Save QR-code on your mobile phone or print QR-code from your booking confirmation.

2



If you have entered your licence plate number in advance, you can drive in without a QR code. Your licence plate number will be recognised for entry. If you have problems, please use the QR code to enter the car park.
Parking tickets that have already been paid for will be issued automatically.

2



Scan QR-Code at the barrier for entrance.

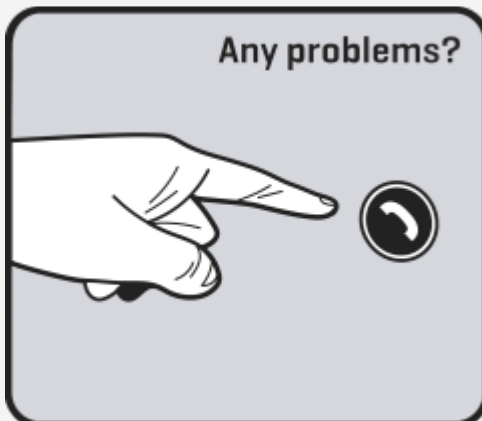


You will receive your park ticket that has already been paid.

3



If your actual parking period differs from your booked period please check your park ticket at one of the pay machines. For exit please insert ticket at the barrier.



For any problems use the call button.

Important information on your booking:

- With this booking confirmation you can enter the car park even if it is displayed as 'full'.
- This booking entitles you to enter and leave the booked parking area once.
- You can cancel your booking [here](#) . Cancellations are free of charge up to your booked entry time.

- A refund of the unused parking time is not possible.
- There is no fixed parking space allocation.
- If you significantly exceed the booked parking period, you can pay for the additional parking time using your entry ticket at the parking pay station. It is not possible to extend the parking time booked online at any time. The fee to be paid subsequently will be charged after the [Tariff table "Overparking \(PDF\)"](#).

You can find more information on parking at Munich Airport on our website www.munich-airport.com/parking.

With any problems please contact kontakt.parken@munich-airport.de or Phone: +49 89 975 222.

Best regards
Your Munich Airport Parking team

[Manage booking](#)

[Getting here by car](#)



[Restaurants](#)



[Accessibility](#)



[Arriving](#)



[Departing](#)



[Services](#)



[Shops](#)

[Contact](#) / [News](#) / [FAQs](#)

Flughafen München GmbH
Nordallee 25
85356 München-Flughafen
Germany

Managing Directors:
Jost Lammers
Jan-Henrik Andersson
Thomas Hoff Andersson
Register of Companies 5448
VAT Reg. No. DE 12 9 35 2 36 5

[Legal notice](#) / [Terms of Use](#) / [Privacy Policy](#)

© 2025 Flughafen München GmbH